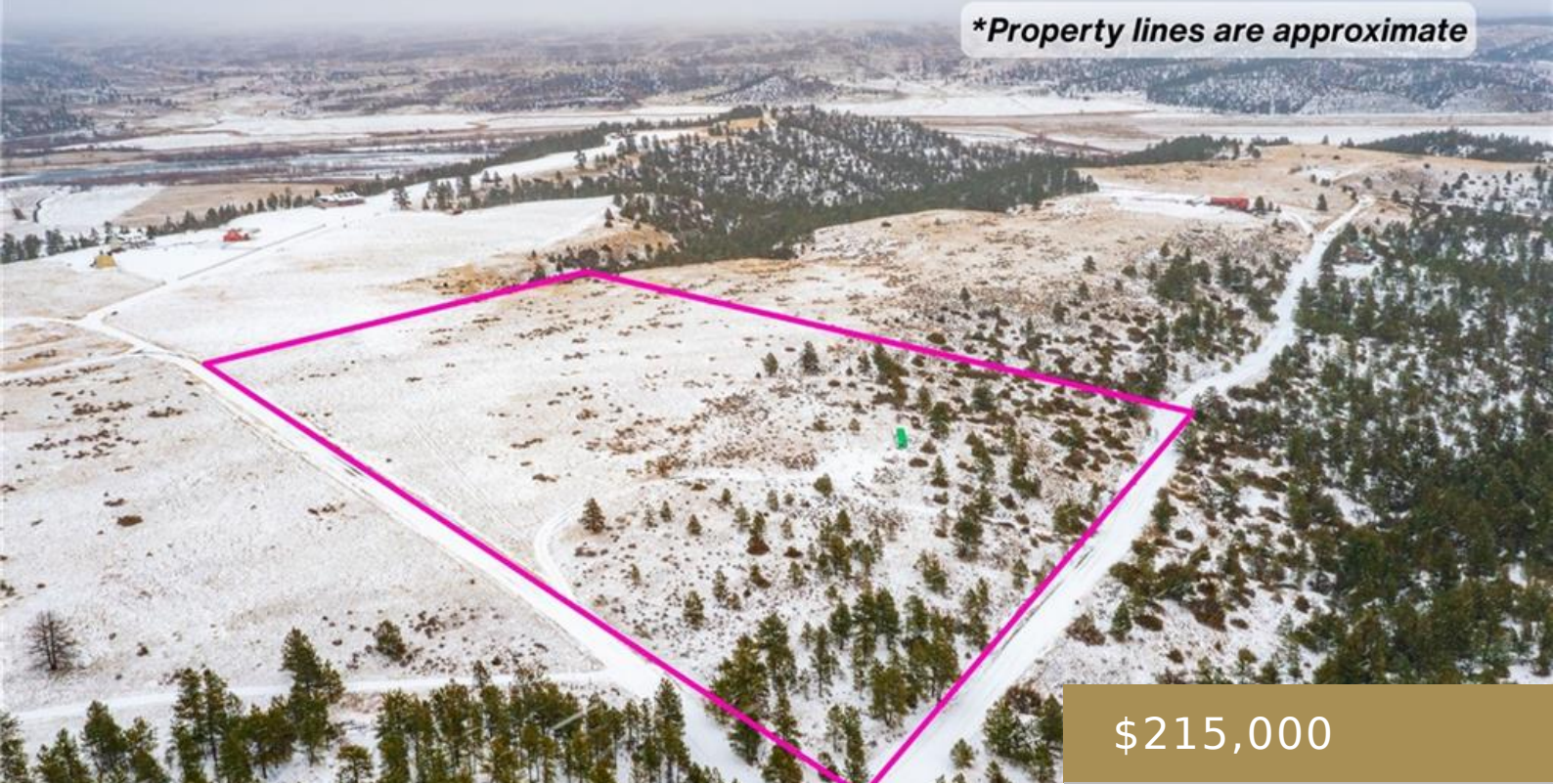


\*Property lines are approximate



\$215,000

- Residential
- Lots and Land
- Active

## REED POINT, MT, 59069

<https://billingsrealtybrokers.com>

YELLOWSTONE RIVER RANCH, S09, T02 S, R19 E, Lot 183, COS 269112 Embrace Montana living on this stunning 21.88-acre slice of Reed Point. All the heavy lifting is done—electric is in, the well is drilled, and sanitary restrictions are lifted—so you can jump straight into building your dream home. Spend your days with private community [...]



## Basics

**Category:** Lots and Land

**Status:** Active

**Lot size:** 953093 sq ft

**County Or Parish:** Stillwater

**DOM:** 1

**Type:** Residential

**Half baths:** 0 half baths

**Zone:** UNZON

**Number of Lots:** 1



---

## Building Details

**Water:** Well

---

## Amenities & Features

**Sewer:** Septic Tank

**Gas:** No

**Electric:** In Street

---

## Miscellaneous

**Restrictions:** See Deed

**Street Surface:** Dirt

**Virtual Tour Link:**

<https://www.propertypanorama.com/instaview/bmt/356854>

**Possession:** At Closing

**Showing Instructions:** Drive By

**Subdivision:**  
Yellowstone River  
Ranch

**Parcel Number:** 1220080

**List Office Name:**  
Realty Billings

---

## Nearby Schools

**Junior High School:** Reed Point

**High School:** Reed Point

**Elementary School:** Reed Point

---

## Fees and Taxes

**Tot Taxes:** \$94

